



**3350 Cimmaron Road**  
Upper Arlington, OH 43221

**\$759,840**  
**2,826 square feet**

4-5 Bedrooms

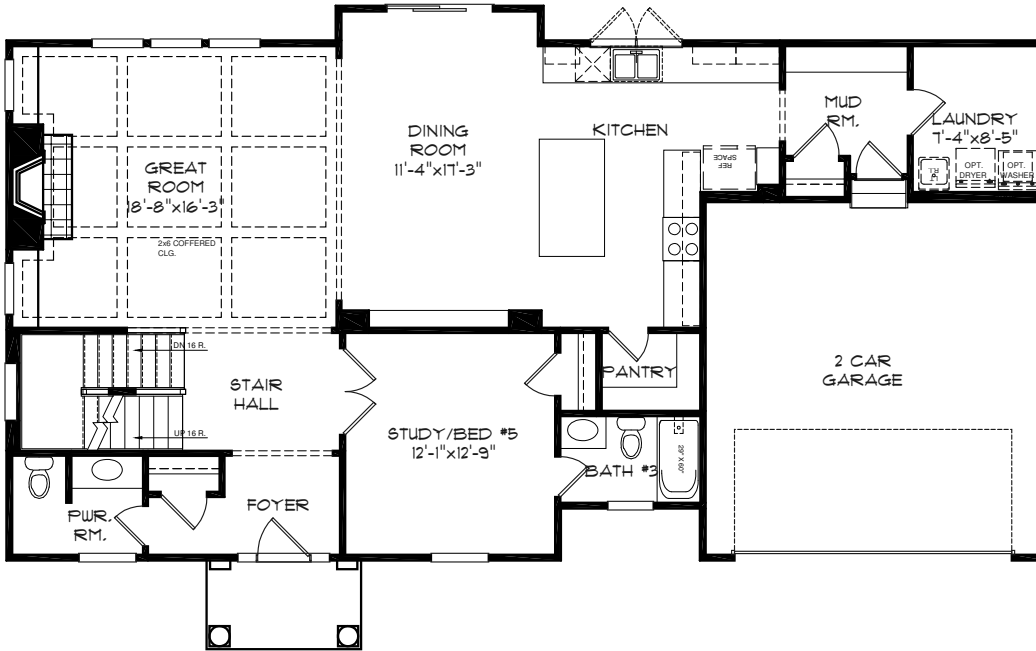
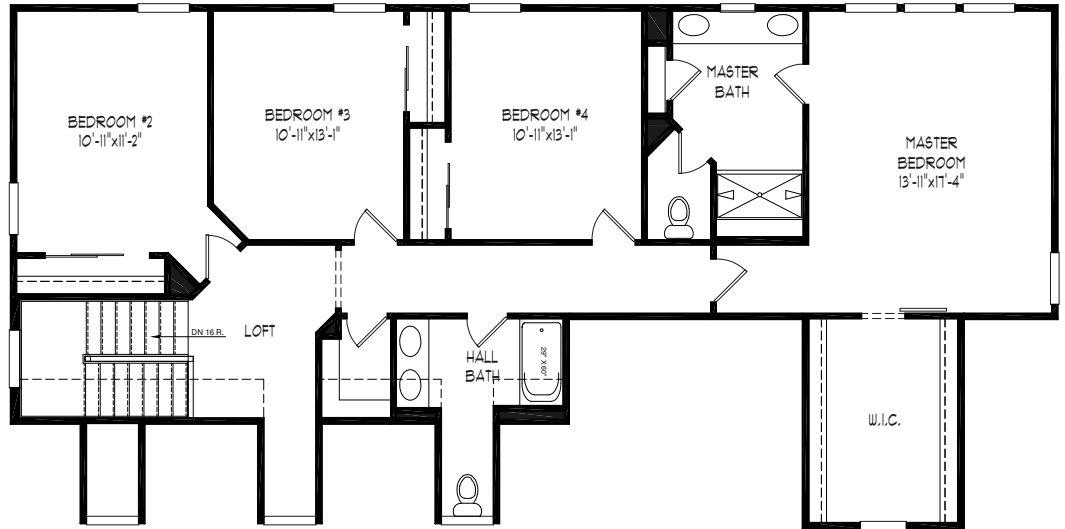
3.5 Baths

2 Car Attached Garage

## OUTSTANDING FEATURES

- 9' tall full Basement with egress windows & plumbing rough-ins
- Classic traditional exterior architecture
- Bright white modern Kitchen with custom cabinetry, stainless appliances & walk-in pantry
- Open floor plan
- Solid hardwood floors
- Endless closet space
- Walking distance to Fancyburg Park & Wickliffe Elementary

## SECOND FLOOR



## FIRST FLOOR

the **MORE**  
THOUGHT  
per square  
foot home

**compass**  
HOMES

CompassHomes.com  
EQUAL HOUSING OPPORTUNITY

Although this brochure is believed to be correct at the time of publication, we reserve the right to make changes without notice or obligation. Room sizes and features (windows, doors, etc.) may vary depending on the options and elevations selected. This brochure is for illustrative purposes only and is not part of a legal contract. It is recommended that the architectural blueprints be reviewed for further clarification of features. The elevations and floor plans may be shown with some optional items (porch railings, metal roofs, side load garages, stone, brick, etc.). Optional items are available at additional cost, and not all features are shown. Please contact Compass Homes for further information.

PROPRIETARY RIGHTS NOTICE: Any drawings, renderings, images or attachments are the property of Compass Homes, Inc. and contain proprietary information. Use, disclosure or reproduction of these drawings, renderings, images or attachments or its contents, in whole or in part without the express, written permission of Compass Homes, Inc. is strictly prohibited. © 2019 Compass Homes, Inc. ALL RIGHTS RESERVED.

Rev. 09/30/2019